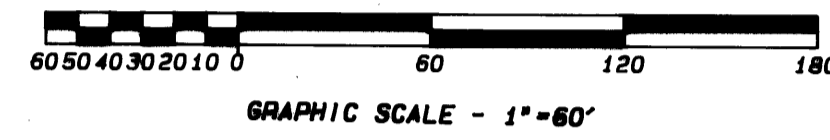


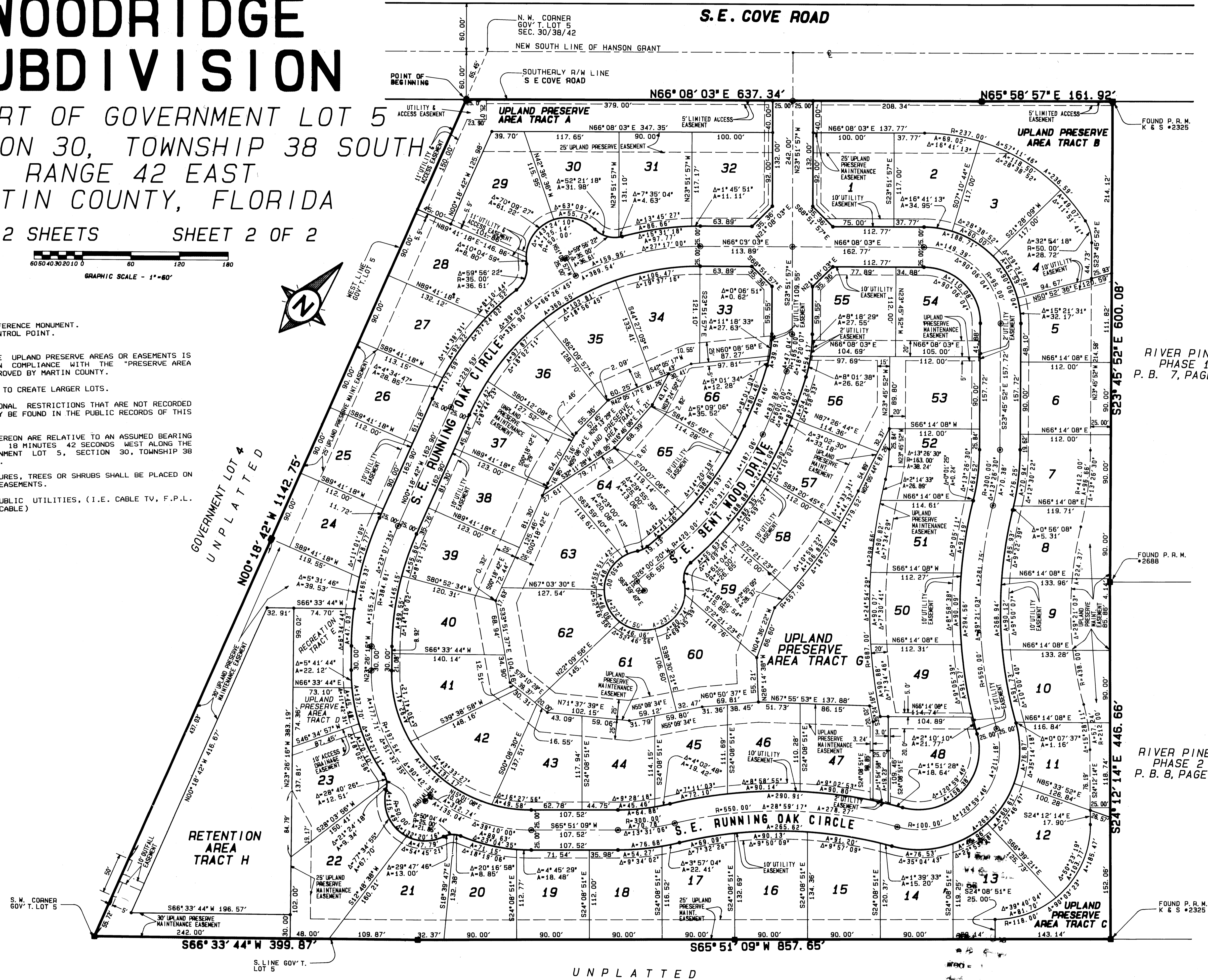
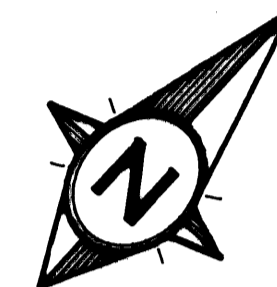
WOODRIDGE SUBDIVISION

IN PART OF GOVERNMENT LOT 5
IN SECTION 30, TOWNSHIP 38 SOUTH
RANGE 42 EAST
MARTIN COUNTY, FLORIDA
IN 2 SHEETS SHEET 2 OF 2



NOTES:

- DENOTES PERMANENT REFERENCE MONUMENT.
 - DENOTES PERMANENT CONTROL POINT.
1. NO ALTERATION OF THE UPLAND PRESERVE AREAS OR EASEMENTS IS PERMITTED, EXCEPT IN COMPLIANCE WITH THE "PRESERVE AREA MANAGEMENT PLAN" APPROVED BY MARTIN COUNTY.
 2. NO LOT SPLITS EXCEPT TO CREATE LARGER LOTS.
 3. THERE MAY BE ADDITIONAL RESTRICTIONS THAT ARE NOT RECORDED ON THIS PLAT THAT MAY BE FOUND IN THE PUBLIC RECORDS OF THIS COUNTY.
 4. ALL BEARINGS SHOWN HEREON ARE RELATIVE TO AN ASSUMED BEARING OF NORTH 00 DEGREES 18 MINUTES 42 SECONDS WEST ALONG THE WEST LINE OF GOVERNMENT LOT 5, SECTION 30, TOWNSHIP 38 SOUTH, RANGE 42 EAST.
 5. NO BUILDINGS, STRUCTURES, TREES OR SHRUBS SHALL BE PLACED ON UTILITY OR DRAINAGE EASEMENTS.
 6. EASEMENTS ARE FOR PUBLIC UTILITIES. (I.E. CABLE TV, F.P.L. CABLE AND TELEPHONE CABLE)



CLERKS CERTIFICATE RECORDING
I, MARSHA STILLER, CLERK OF THE CIRCUIT COURT OF MARTIN COUNTY, FLORIDA, DO HEREBY CERTIFY THAT THIS PLAT WAS FILED FOR RECORD IN PLAT BOOK 12 MARTIN COUNTY, FLORIDA, PUBLIC RECORDS THIS DAY OF 1990

MARSHA STILLER
CLERK CIRCUIT COURT OF MARTIN COUNTY, FLORIDA

FILE NO. _____

BY: DEPUTY CLERK
CIRCUIT COURT SEAL

SUBDIVISION PARCEL CONTROL NO. _____

RIVER PINES PHASE 1
P. B. 7, PAGE 98

RIVER PINES PHASE 2
P. B. 8, PAGE 5

DAILEY AND ASSOCIATES
LAND SURVEYORS
288 CENTER STREET, 24-5
JUPITER, FLORIDA 33458
PHONE (407) 746-6464